

Click™ Connectors: A key component of the Universal WorkBench™

“All I want to say is...as a person that has been prototyping for 35+ years, *this is the best setup I have ever worked with.* Thank you.”

— LEWIS T., SAN ANTONIO, TX

Spend less time figuring out how to mount components and more time connecting and programming.

Less Frustration. More Innovation.

Now you can focus on innovation, education, or simply have fun with electronics! Once mounted on a Click, your electronics can be arranged and organized on a Phase Dock WorkBench™ in seconds. Whether you want security, portability or good looks, the WorkBench gives you confidence in your build and pride in the results.

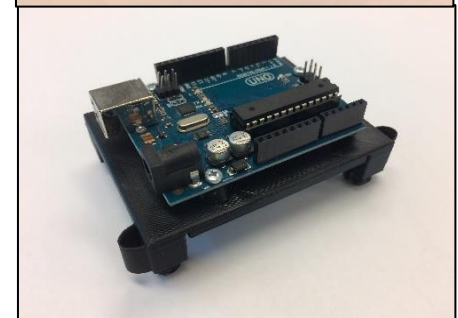
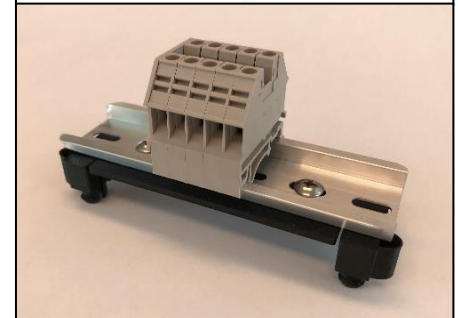
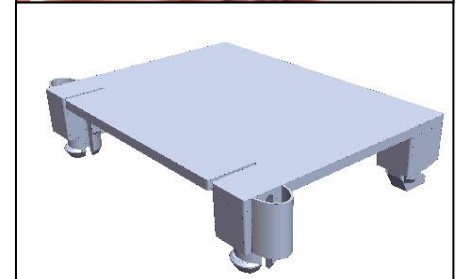
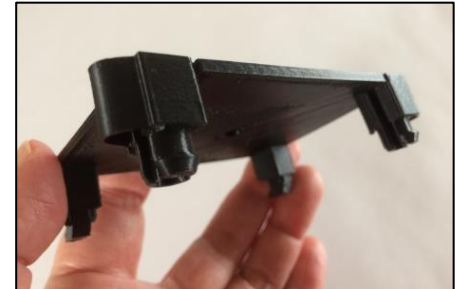
Specifications

Item	Part Number	Pkg Qty	Mounting Platform ABS 3D-printed
1x2 Click	10117	2	1.56" x 2.38" (40mm x 60.40mm)
1x3 Click	10118	2	1.56" x 3.35" (40mm x 85.4mm)
1x4 Click	10119	2	1.56" x 4.35" (40mm x 110.4mm)
1x5 Click	10165	1	1.56" x 5.31" (40mm x 135mm)
2x2 Click	10113	2	2.53" x 2.38" (64.33mm x 60.40mm)
2x3 Click	10114	2	2.53" x 3.35" (64.33mm x 85.4mm)
2x4 Click	10115	1	2.53" x 4.35" (64.33mm x 110.4mm)
2x5 Click	10116	1	2.53" x 5.31" (64.33mm x 135mm)
3x3 Click	10163	1	3.50" x 3.36" (89mm x 85.4mm)
3x4 Click	10120	1	3.50" x 4.35" (89mm x 110.4mm)
3x5 Click	10156	1	3.50" x 5.31" (89mm x 135mm)
4x4 Click	10164	1	4.51" x 4.35" (114.5mm x 110.4mm)
4x5 Click	10157	1	4.51" x 5.31" (114.5mm x 135mm)

Use Clicks with any Universal WorkBench base or platform.

Electronics Mounting Guide

No matter what electronic component you use, there is a way to mount it. Download the Electronics Mounting Guide eBook at <https://www.phasedock.com/electronics-mounting-guide>



Electronics not included.